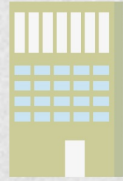




COMMUNITY INTEGRATION *makes sense*

IN ILLINOIS...

1,730 PEOPLE WITH
DISABILITIES LIVE IN
STATE INSTITUTIONS
3rd most in the country



We could *save*
\$337 MILLION /yr



by redirecting funds from state institutions to
programs that allow people with

intellectual & developmental disabilities

the opportunity to live an

improved quality of life in the community.

\$429 MILLION /yr
TO OPERATE **7** STATE INSTITUTIONS

Community VS *State Institution*

\$92M /yr
estimated cost to fund 1,730
people in the community

***\$429M** /yr
cost to fund 1,730
people in institutions

\$53,000 /yr
per person

\$248,000 /yr
per person

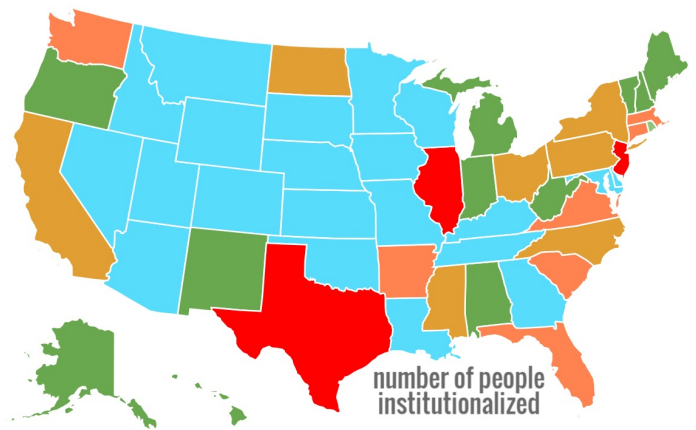
ILLINOIS CAN SERVE



FOREVER



National Trend is to Downsize



● 0 ● 1-500 ● 501-1000 ● 1001-1500 ● 1501+

Source: State of the States 2015

ILLINOIS RANKS

47th

funding community
based services



50th

size of residential
settings

22,000

PEOPLE WITH DISABILITIES

waiting for services



Illinois has the **3RD**
largest state institution population

14 states including the District of
Columbia have **NO** state institutions

96% downsized state institutions
between 2011-2013

70% states have less than 500
people in state institutions

*Illinois Department of Human Services. As of March 2015, there are 1,730 Illinois residents with intellectual and developmental disabilities in state operated institutions. State of the States 2015 report used most recent data from FY 2013. For more information visit goinghomeillinois.org.